

INREM Foundation Annual Report 2022-23



This was a group discussion, but it was an important one. For first time in many years, the govt officials across all States & UTs who worked on water quality assembled in Dr. Syama Prasad Mukherjee National Institute of Water & Sanitation (SPM-NIWAS) in Kolkata to discuss & share their water quality issues.

This was a critical milestone for the journey for National Jal Jeevan Mission - giving water quality its due significance & INREM Foundation supported this journey.

Read our annual report to find out more



For a safer, healthier and richer natural environment,
with equal access and opportunities to all



INREM Communities

College students from Social Work Department being trained in Jhabua with the support of our district team. The focus is on improving understanding on Water testing, food safety and specific tools like 5 fingers Concept, nutritional strategies for addressing water contamination problems.

Message from Executive Director

Welcoming you to another eventful year here at INREM!

Our relentless efforts on making issues of Water Quality more visible in India, bore fruit in this year when INREM was recognized as National Lead by Ministry of Jal Shakti for Water Quality issues. This role gives us immense responsibility for the Jal Jeevan Mission and Swachh Bharat Mission programmes countrywide.

In 2 states, Assam and Rajasthan, we are lead partners now with the Jal Shakti ministry, and the beginnings towards a large reachout in Assam to students was made with the Jal Doot programmes.

We came to an end of a 3 year partnership with the Azim Premji Foundation in Jhabua and Ali Rajpur that has led to significant improvements in the lives of people within 38 villages.

Our partnership with UNICEF in Rajasthan has now scaled to all districts of the state on the fluoride issue and brings a strong impact to our efforts with the European Union (EU) partnership.

INREM's approach to large scale problems support by Arghyam is now maturing into a long term vision. All of this is building us towards the future and making our mission stronger. Thanks to all of you and look forward to getting your valuable feedback on this report!

INREM Facts

Visioning into the future is a constant passion in INREM and it keeps moving our radar in the direction of changing ecosystem concerns !

Contents

INREM Facts

Adopting a result oriented monthly participatory planning process, INREM has sharpened itself as a high impact organization !

Section	Page no.
Water quality District programmes	2
Rajasthan Govt Partnership	3
Solar Program	4
Enabling Water quality solutions at scale	5
Other programmes	6
Stories from the field	7
Person highlight	8
Meet the Board	9
Summary of accounts	10
Future direction	11

Data snapshot	
No of states supported	Habitations reached
5	1750

Water quality
District
programmes

“ This year was of connecting the various dots happening through the district water quality platform across India. The learning led to support Jal Jeevan Mission in different approaches.

The support were directly to the states in improving the processes of water quality management. Notable mentions are of Assam - where the focus is on Supporting 2 lakh Jal Doot Student volunteers for Water testing and community water management.

In Madhya Pradesh, it is Supporting in 31 districts for Water quality monitoring and surveillance (WQMS) with NGO network as Key resource centres (KRC)

Please do read the complete report by using the [link](#) .

Click [here](#) to download detailed overview of the program

INREM Facts
Research, Community programmes, Policy support, Campaigns, Innovations go hand in hand at INREM!

”



Rajasthan Government Partnership

INREM Facts

DFMCC constitution released, 15 districts, 18 meetings, IFM approach operationalized, positive outcomes.

“

The release of the District Fluorosis Mitigation Coordination Committee (DFMCC) constitution by the State Department has driven notable progress. Orders for committee constitution reached 15 districts, resulting in 18 meetings that effectively implemented the Integrated Fluorosis Mitigation (IFM) approach. The State's commitment was evident through an official letter for a State workshop cum review meeting, highlighting departmental convergence and DFMCCs' implementation.

The State Workshop cum Review Meeting in December 2022 oriented 30 District NPPCF teams to the IFM Approach, with State officials actively enhancing capacities and bolstering NPPCF activities. DFMCCs gained momentum with MD-NHM's endorsement, and notifications were issued for their constitution in 30 endemic districts, leading to 18 meetings in 15 districts by December 2022.

Collaborations with development partners and line departments enriched the initiative, while technical aid to PHED for the state capacity-building plan strengthened Water Quality Monitoring and Surveillance. The collective approach ensures access to safe water and program impact amplification.

”

[Click here to download detailed report](#)

Data snapshot

No of trainings	Districts reached
07	30



NPPCF Workshop with officials from Health Department



PHED State consultation meeting under the chairperson of ACS, PHED, GoR & NEERI

INREM Facts

Our growing partnerships with state and national government is building INREM to be an organization contributing to nation building !

IWMI Supported Solar Powered GroundWater Abstraction Study

“

With the expansion of solar irrigation, with zero energy-related operational cost (a situation akin to subsidized or free electricity), the wider concern has been whether the replacement of diesel pumps or non-subsidized electric pumps with solar pumps will lead to an increase in the volume of groundwater abstracted, increasing the risk of worsening overexploitation

This IWMI funded study is carried out in Gujarat in two districts: Anand and Botad. Two agricultural feeders (one solar (SKY) and one non-solar (non-SKY)) are selected in each of the districts. The two districts have been chosen for their contrasting hydrogeological characteristics. Anand in central Gujarat has alluvial aquifers which are generously recharged by the Mahi canal irrigation systems whereas Botad in Saurashtra has hard rock aquifers, with little inter-year storage and highly responsive to both pumping and recharge. In Saurashtra, irrigation water is predominantly sourced from dug wells whereas in Anand, borewells are predominantly used

Use the [Link](#) here to download this project specific report for the year.

Click [here](#) to download detailed overview of the program

”

Data snapshot	
No of Districts	Number of farmers
2	160



Interaction with farmers in Anand with IWMI officials



Collection of data from the groundwater source in Botad

Enabling Water quality solutions at Scale

INREM Facts

Our well rounded programmes work with Water, health, nutrition, Sustainability and other streams bringing them together into our work !

“

INREM's vision of enabling sustainable solutions on water quality for anyone, anywhere, utilizing the strength of networks and emerging technologies. By harnessing the power of digital networks, people can share knowledge, resources, and data to develop effective solutions that address water quality challenges. With the knowledge & digital tools, anyone, anywhere can take part in efforts to improve water quality and ensure clean drinking water for everyone.

Through the Arghyam support, the goal is to support the National Jal Jeevan Mission. To enable water quality solutions at scale, the program has primarily adopted three initiatives at different levels:

National: Supporting capacity building for the JJM through Water quality management course & Water quality learning groups

State: Systemic intervention with the government of Madhya Pradesh (M.P) in the Jhabua and Sehore districts. Building block capacity for Executing district-level action plans

Community: Engaging community resource persons to be ambassadors for water quality (Jal Doot, Jal Mitra) in Assam.

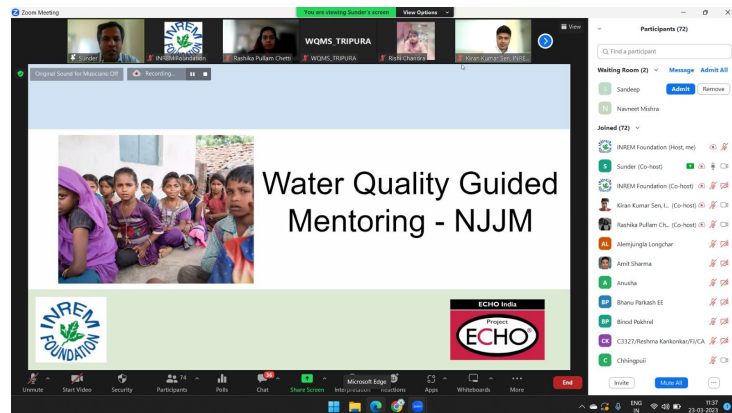
Use the [Link](#) to download the report of this programme

”

Click [here](#) to download detailed overview of the program

Data snapshot

No of States reached	Number of JalDoots
31	25000



Other Programmes

INREM Facts

We are an age diverse organization, having members from 25 till 80. There is something that each generation contributed to each other !

To acknowledge women's role in helping the communities access safe water, INREM identified #WomenWaterQualityChampions. This campaign celebrates the pivotal role of women in water.

INREM Foundation was identified as a Thematic Lead under the Rural WASH Partners Forum (RWPF) and State Lead Role for Rajasthan and Assam.

Developed partnerships during this year with International Water Management Institute (IWMI) on Solar based irrigation, with Tata Trusts on water safety.

Our regional programmes developed numerous partnerships, with Gram Vikas in Odisha being one important such partnership.

Celebrating women helping communities access safe water!



#WaterQualityChampions



Co-funded by
European Union

Campaign to highlight the role of women in water quality management

Stories from the field

INREM Facts

We have musicians, artists and storytellers in the INREM, who add colour and new dimensions to the work atmosphere !

“

इस तरह का निर्माण हमने यहां पर पहली बार किया एवं निर्माण करते समय हमें क्या-क्या चुनौतियां आ सकती हैं चुनौती के लिए हम किस तरह अपने आप को तैयार कर सकते हैं एवं हम चुनौती से क्या क्या सीख सकते हैं! एवं जो पानी में फ्लोराइड की मात्रा है ! लोगों को तो ज्यादा डर नहीं है लेकिन हमें पता है कि लोगों लिए कितना खतरनाक हो सकता है।

We have done this type of construction for the first time here and what are the challenges we may face during construction, how can we prepare ourselves for the challenge and what can we learn from the challenge! And the amount of fluoride in the water! People are not much afraid but we know how dangerous it can be for people.

Click [here](#) to see the full story online

”

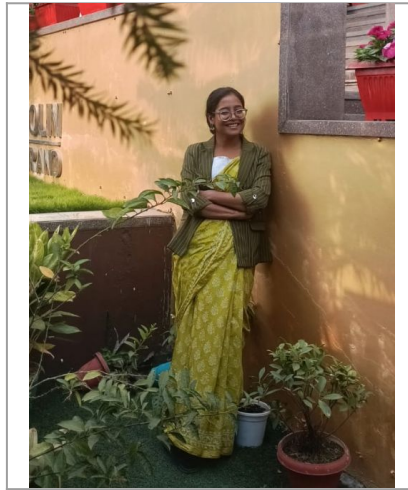


Story written by Karan Singh from our Dungarpur, Rajasthan team on building tank for rainwater harvesting.

Person Highlight

INREM Facts

People in INREM can speak Hindi, Telugu, Bangla, Assamese, Tamil, Gujarati, Kannada, and many local dialects!



Sumanjita Burman: Our Person Highlight for this year

“

Sumanjita Burman works with INREM's Partnerships team from Guwahati. She has been with the organization for 3 years and contributed to the Assam government partnership programme with Jal Jeevan Mission.

Sumanjita comes with a post graduate in MA in Social Work (specialization in Public Health) from Tata Institute of Social Sciences, Guwahati.

Under her, the Partnerships with the state agencies have led to coordination of the JalDoot program..

As a part of INREM's emerging leadership, Sumanjita carries important responsibilities within the organization, especially in organization partnerships. We see her growing and developing the organization over the next years.

”

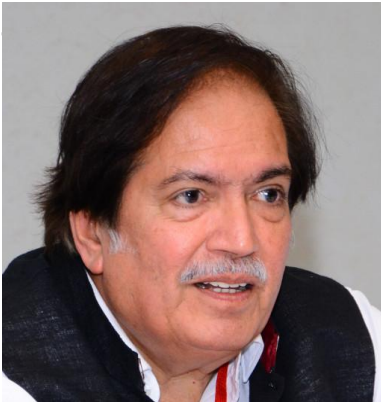
INREM Facts

Employee wellness programme is one of its kind in INREM. Get in touch with us to know more !

Meet the Board



Dr. Katar Singh,
Emeritus, Chairman



Prof Tushaar Shah,
Chairman



Dr. Shivani Mishra,
Member



Mr. Dhaval Patel,
Member



Dr. R S Pundir,
Member



Prof. Parthasarathy
Ganguly, Member



Ms. Alka Palrecha,
Member

INREM Facts

Internal programmes and External support are both getting balanced out in INREM making us a constantly learning organization !

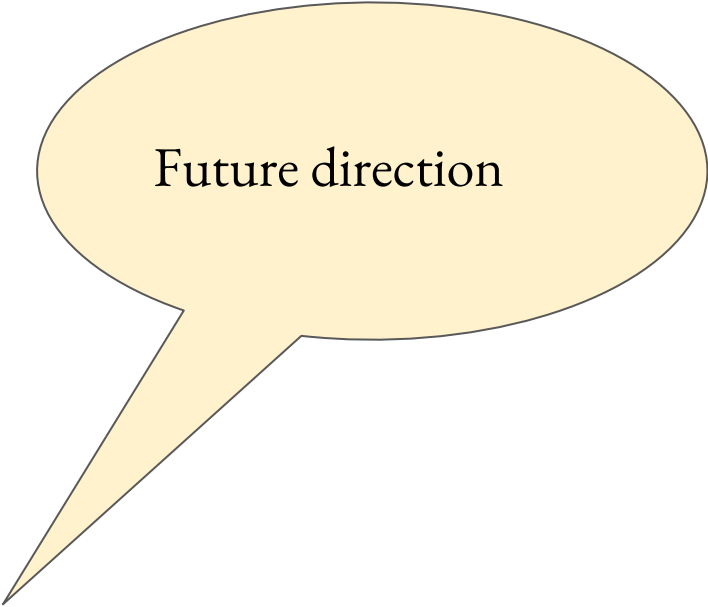
Summary of Accounts

Balance Sheet as on 31-03-2023

FUNDS AND LIABILITIES	NOTE	AMOUNT (Rs.)	PROPERTY AND ASSETS	NOTE	AMOUNT (Rs.)
Trust Funds or Corpus	1	1362296.00	Immovable Properties	5	643930.00
Other Earmarked Funds	2	21233111.66	Investments		
Loans (Liability)			Furniture and Fixtures	6	749227.30
Liabilities	3	1795659.00	Loans (Asset)		
Income and Expenditure Account	4	576867.22	Advances	7	1286905.00
			Outstanding Incomes	8	45238.00
			Cash and Bank Balances	9	22242633.58
TOTAL		24967933.88	TOTAL		24967933.88

Click here to download detailed report

Use the [Link](#) to read more



Future direction

“

The organisation's contribution to the sector of water quality is being acknowledged. The recognition of thematic lead at the national level is evidence to this. In the coming years, the team is on a journey to explore the next leap in water programs to build the foundation even stronger.

The experiences which we are going to learn on this journey will be of immense value and shape the understanding of water quality across the agriculture, industries and ecosystem.

This is going to be an exciting time. So, gear up with us and we raise the bar.

Join us on this common journey !

”



INREM Facts

There are 42 full-time people working with the organization in 8 offices !

Contact us



inremf@gmail.com



<http://www.inremfoundation.org>

Join our network



Water Quality Network



Join our course

